

WHITNEY UNITED METHODIST CHURCH

Rev. Christina Thompson, Pastor

Worship with us every Sunday at 10:00 a.m.
3315 Overland Boise, Idaho 83705

May 2019

*He
has
risen
indeed!*

Christina

W
H
I
T
N
E
Y

OPPORTUNITIES

Sunday

Worship 10:00 a.m.

Adult Sunday School 8:30 a.m.

Bible Study 9:30 a.m.

Children's Sunday School 10:20 a.m.

Nursery 9:30 a.m.

Monday

River Bank Choir 4 p.m.

1st & 3rd Mondays

Stephen Ministry 6:30 p.m.

2nd & 4th Mondays

Shawlers 6:30 p.m.

Second Tuesday

Congregational Care 10:00 a.m.

1st Wednesday

United Methodist Women 12 noon

Wednesday

Prayer and Share small group 1:30 p.m.

Chancel Choir 7:00 p.m.

Thursday

6 Ways to Sunday Praise Band 5:45 p.m.

3rd Friday

WEPRAY team 3:00 p.m.

Community dinner 6:00 p.m.

2nd Saturday

United Methodist Men 9 a.m.

Every Saturday

Saturday Lunch 11:00 a.m.

Contact us:

Phone — 208-343-2892

Email — 3315whitneychurch@gmail.com

website — www.whitneyumc.org

Facebook — Whitney United Methodist Church



From our pastor.....



It was announced in worship on April 14, that Lesli McGowan will be appointed as a licensed local pastor to Simpson UMC in Pullman, Washington, effective July 1, 2019.

I remember almost 10 years ago, when I first came to Whitney UMC, having a conversation with Lesli, where she talked about feeling God call her to ministry. In these 10 years, this church has walked with Lesli as she kept pondering what God was actually calling her to do. In these last two years, the church has especially helped her answer the call to be a licensed local pastor.

So it was with great joy in my heart to hear our District Superintendent Karen Hernandez read the letter announcing Lesli's appointment and call her Pastor Lesli.

I am so excited for her and for this new part of the journey that God is calling her to.

But if I am honest, there is a part of me that is very sad at this announcement.

It means that Lesli will leave this church. She has become such a part of the life of this congregation and has been such a part of helping this church move forward. For a while in this process, I had tried to convince the powers that be (including God) that Lesli should be appointed here with me to help us in the next part of this church's life.

About a year ago, though, it became clear to me that having Lesli stay here was not part of God's plan. In fact, at one point, I felt God telling me to stop trying to force this process. It would play out as God intended. So I started praying that God would send Lesli where she was most needed and that if it was not here at Whitney, that God would send us who God is preparing to come. I started feeling incredible peace, when I started praying this prayer—(instead of the one that told God what was the best plan).

So when Lesli called me to tell me about this appointment being offered, I was so excited for her. God knows her gifts and her talents and this appointment with Simpson UMC and the Campus Ministry at Washington State University, will be such a great fit for her.

I also know that God will bring to Whitney UMC the person who will be the right person for our Family Life Director position.

So while I am still a bit sad about saying good-bye, I am so excited for Lesli and I pray that all of us will hold her in our prayers as she packs, moves, goes to school this summer and starts her ministry as Pastor Lesli.

We will celebrate her new ministry and say good-bye to her on June 9, 2019.

(continued next page)

COUPLE OF ANSWERS TO QUESTIONS

Is Simpson UMC in our Annual Conference?

No. We are part of the Oregon-Idaho Annual Conference and Simpson UMC is part of PNW—the Pacific Northwest Annual Conference (Washington and the panhandle of Idaho). However, the two annual conferences as well as the Alaska Missionary Conference) share a Bishop and all three annual conferences are part of the Greater Northwest Episcopal Area. In the last couple of years, we have done more and more ministry with PNW and more and more pastoral appointments are made across conference lines.

Will Lesli be ordained?

No. There are a couple of different paths to ministry in the UMC. Rev. Christina is ordained as an Elder in the UMC and the process is different than what Lesli is doing. Lesli is licensed as a Local Pastor (LLP). The local pastor performs all the duties of an ordained pastor, including preaching; leading worship; performing baptisms, confirmations, and funerals; officiating at weddings; presiding over communion; and receiving new members.

The difference is that the local pastor is authorized to do this only at his or her particular congregation, while the elder may perform these functions anywhere.

There is also usually a difference in the amount of schooling between an ordained pastor and a licensed local pastor.

Rev. Christina has a Master of Divinity degree from Wesley Theological Seminary. Lesli is getting her school through a process called Course of Study where she will take classes every summer for 5 years to complete the Course of Study. She is taking these classes from Claremont Theological Seminary currently in California.

Will Lesli wear a stole?

No. A stole is a symbol of ordination. So Rev. Christina wears the stole as a sign that she is ordained. As a licensed local pastor, Lesli will wear what is called a scapular that will be worn over her robe. Scapulars can be worn by lay or clergy. The scapular is not a sign of any office, but rather a sign of being a "worker" in the kingdom of God. (It is derived from aprons monks would use to help collect what they were harvesting in the fields). But in the UMC it has become more common for LLP to wear scapulars with their robes.

Is there a difference between the titles Reverend and Pastor?

As far as I understand, no. They are both titles that are used by clergy and can be used interchangeably. It is a personal preference. When I first became clergy, I intended to be called Pastor Christina. But it just felt cumbersome to say. Reverend Christina just rolls off the tongue better.

Pray for Lesli McGowan

O holy God, we thank you for the gifts you have bestowed upon Lesli McGowan and the ways that those gifts have been used here at Whitney UMC. Fill her with a sense of peace and confidence about this next phase of her journey as she begins pastoring at Simpson UMC. Fill her with your love and grace so that she might share your love with those she encounters. Fill her with your vision so that her ministry is a reflection of your vision for her, her church and her community. Surround her with people to support, uplift and guide her. We are grateful for her time with us and we release her to her new congregation.

Amen.

Prayer for Whitney's Family Life

Director Position

Creator God, we ask your wisdom and guidance as we seek to fill our Family Life Director position. Help us to discern what this position should look like, how it connects to our mission focus to disciple, serve and provide resources to children and families, and how we financially support this position.

As we work with you to make this position a reality, help us to trust that you are providing the right person to share their expertise and talent with us and our neighborhood. We give you thanks for what you are doing in this church and how your spirit is moving. Amen.

UNITED METHODIST WOMEN

Sixteen women enjoyed a delicious potluck lunch at our April meeting as well as a very interesting program about women in mission throughout the years which was presented by Phyllis Ross.

Several of us attended the Every Member Enrichment Event in Meridian on April 6. A very interesting program on Headstart was presented. Units were recognized for their achievements during the year. Our Whitney unit was recognized for being a 5 Star Giving Unit and Athlete in our Healthy Unit program. Our certificates will be on the bulletin board in the hallway.

May meeting – Wed. May 1 at noon with a potluck lunch. Shelley Cooper presented the program on making weighted blankets. It has been shown that these weighted blankets are helpful for persons with various abilities.

June meeting – Wed. June 5 at noon with a potluck lunch. This will be our UMCOR meeting. Becky Platt will speak about her experiences working with UMCOR and we will assemble flood buckets under the direction of Jan Spencer. Our goal is to assemble 6 buckets. We are asking for donations from anyone in the church. This spring we have seen an unusual amount of flooding in all parts of our country so these flood buckets are needed. A list of items is below..

ITEMS MAY BE TAKEN TO THE CHURCH OFFICE ANY TIME BY SUNDAY JUNE 2

United Methodist Committee on Relief (UMCOR) Cleaning Kit

- One 5 gallon round bucket with re-sealable lid
- One 32-64 oz. Bottle liquid laundry detergent
- One 16-40 oz. Bottle liquid concentrate household cleaner (no spray cleaners)
- One 16-34 oz. Bottle dish soap (Dawn works the best)
- One 4-8 oz pump spray air freshener (3 solid or 3 gel fresheners are also acceptable)
- One 6-14 oz pump spray insect repellent (pack of 10-20 wipes also acceptable)
- One scrub brush (with or without handle)
- 18 re-useable cleaning wipes – no terrycloth, microfiber or paper towels
- 5 scouring pads sponges – no stainless steel pads with soap in them
- 36-50 clothespins
- One 50-100 ft. clothesline (cotton or plastic)
- 24 roll of heavy-duty trash bags (33-45 gallon sizes)
- 5 N95 particulate respirator dust masks (1-3mm thickness) no surgical masks
- Two pairs kitchen gloves – durable for multiple uses
- One Pair work gloves – cotton with leather palm or all leather.

We do not formally meet during the summer but look and listen for announcements of “field trip” opportunities during the summer. The June edition of the Chronicle will have information about this summer's Mission u.

Our vision: Turning faith, hope and love into action on behalf of women, children and youth around the world.

Coming Volunteer Opportunities at Whitney Elementary

May 17 – 6-8pm – Cultural Festival – potluck and program. Need help monitoring food, directing traffic

If you would like to help with either or both of these activities, please see Lory Nesor or Rev. Christina.

MAY BIRTHDAYS

- 1 Linda Slupe
- 2 Tom Old
- 3 Iva Fingerson
Carl Harden
Sue Higgins
- 4 Marilyn Long
- 5 Shelley Cooper
- 10 Kai Wachi
- 11 Becky Daniel
- 12 Jim Davis
- 13 Henry Gris
- 14 Pam Beckwith
Ron Jordan
- 15 Cathie Slocum
Julie Whistler
- 16 Quince Falconer
- 17 Blanche Kadel
Phyllis Ross
- 19 Malcom Duntun
- 21 Robert Gardner
- 24 Richard Shelby
Kaden Falconer
- 25 DeDe Matthews
Brandon O'Meara
- 26 Arny Skov
- 27 Mikki Carr
- 30 Clint Wachi
- 31 Maran O'Meara

MAY ANNIVERSARY

- Shelley & Mike Cooper
- Jeff & Peggy Jackson
- Linda and Ron Jordan
- Kathy & Tom Old
- Kathy and Arny Skov



Whitney UMC has earned a quarterly donation by enrolling in Community Rewards. Your donation is related to how many Customers select your organization and how much they shop. For this quarter, we had 28 households signed up and we received \$73.35. It is easy to sign up at the Customer Service desk at any of the Fred Meyer stores and there is no charge for use. They have our number, but just in case it is XL 760.

MAY HOSPITALITY

SUNDAY SCHOOL NEWS

The Nursery and Sunday School classes combined for the Lenten Season and learned the complete "Lord's Prayer", it's meaning and did put together the entire thing.

Zina Larracochea received a certificate for memorizing the complete prayer.

They also were involved in the "Walk through Holy Week" with the murals in the hallway and the props.

One of their achievements is the bulletin board in the hallway which will be framed and hung in the hallway.

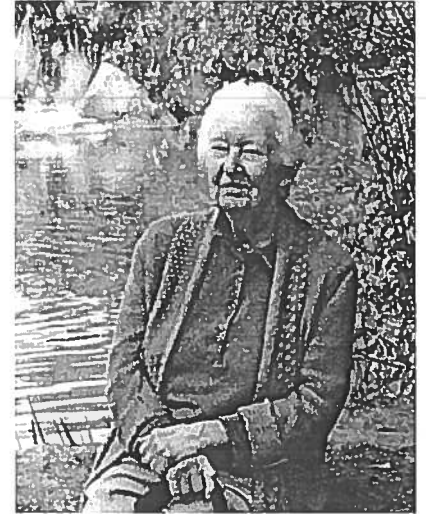
Sixteen children completed the celebration of Jesus' resurrection in the Easter morning Egg Hunt. It's amazing how all the different ages worked together in helping each other!

An interesting showing of love and faith was demonstrated by Isaiah Zavala as he gave all the eggs he had found to a little neighborhood girl who arrived too late to take part in the activity herself.

From
Jody Baer and Lorrie Baer

Date	Acolytes	Greeters	Coffee Hosts	Liturgist	Communion Stewards
May 5	Miriam Fridel Kaylyn Fournier	Shirlee Hubbert Jana Hedges	Gena Waller Marilyn Edwards	David Hawk	Betty Dippi Brandon & Maran O'Meara
May 12	Grace Fridel Zack Warner	James Sorenson	Lorrie Baer Gaye Cabe	Becky Platt	
May 19	Noa Nesor Kaylyn Fournier	Kathy Hammers DeDe Matthews Julie Hall	Arny & Kathy Skov Gordy & Jody Myre	Barb Nolan	
May 26	Samara Legg Miriam Fridel	Gordy Myre Jody Myre	Emily Nelson	Glenda Berto	

IN REMEMBRANCE



Joan Dortehea Wolfe

Joan was born on May 21, 1932 in Akron, Ohio.

She was a graduate of Garfield High School and Akron University .

She was an Alpha Gam sister and received her teaching degree in 1954 and married Marvin Wolfe in 1955.

She then came west with him; settling first in Logan, Utah.

They had three boys, raising them in Wyoming, Utah, Idaho, and Colorado.

She started teaching in elementary school in Ogden, Utah, and substitute taught while her boys were growing up.

She also worked at Teledyne Water Pic in Ft. Collins and in the daycare at the downtown Boise YMCA. She and her family were active members of Methodist, Presbyterian, and Congregational churches in their places of residence and she was an active member of the Whitney Methodist Church in Boise.

She was socially active, involved in PTA, PEO, Eastern Star, The West Ada Alliance.

Those who knew her will remember her fondly for her love, wit, humor, caring and family clarity.

A celebration of Joan's life will be held at Whitney UMC on May 5 at 12:30 p.m.

In lieu of flowers, donations in memory of Joan may be made to Whitney Methodist Church, The Idaho Humane Society, or PEO Chapter CG in Boise.

Joan's survivors include her husband of 69 years, Marv, her children Mark (Julie), Alan (Susan), Richard (Laurie) and four grandchildren.



Sawtooth Family Camp

August 9,10,11, 2019

It's time to start planning for this special weekend in the beautiful country of God's creation. Only a few hours drive from Boise with lovely scenery along the way and the anticipation of the fun and fellowship that awaits you there.

Cabins are available or you may bring your own camping equipment. Food is provided along with worship service, songs, crafts, visiting, fishing and swimming, hiking, or just relaxing and hanging out with friends.

More information will be forthcoming, but this is a good time to put the date on your calendar.

Take I-84 East to Mountain Home

North on Hwy 20 to Fairfield

At Fairfield, north on Soldier Mtn. Road

At the only stop sign, turn right

Follow Sawtooth camp directions on wooden sign

Total mileage is about 143 miles.

Should take around 3 hours or less.

South Junior High has three days of the school year where they have early release and lunch is not served at school on those three days. In this past year, Whitney UMC has stepped in and provided a lunch for those who want or need it. The next day we will provide and serve lunch is May 24 (the last day of school). If you would like to help with this meal and ministry, please see Rev. Christina.

Written copies of Rev. Christina's sermons are available on the welcome table near the kitchen window. You may pick up individual copies of the sermons or the entire set of a series (once the series is finished).

Available now are the entire copies of the Discipleship Series from February and the Lord's Prayer series from March and April.

Whitney UMC's mission focus is to disciple, serve and provide resources to children and families.

Why do we do this? Because we feel God's calling to reach the children and families in our neighborhood and provide the physical items they need (food, clothing, etc.) but also help them be fed spiritually and find their connection to God.

Jenneth Rae McNeas Ayodele invites all her Whitney family to a celebration of her graduation from Riverstone International School on Sunday the 19th of May at the McNeas-Luthy Residence, 3018 Bogus Basin Road, Boise, Idaho. You may RSVP to Annyta: lvtorun@live.com

On June 2, we will be honoring graduates of our church family from high school and colleges. Please provide the name and the school attended of your family that you would like to be so honored.

The United Methodist Women will also be awarding their scholarship to a graduating senior at this service.

A Busy Young Couple..... Maran and Brandon O'Meara



Maran and Brandon O'Meara first met during a mission trip to Arizona for high school students sponsored by Boise First United Methodist Church.

Maran grew up as a part of that church, while Brandon was affiliated with Whitney Church where his grandparents, Joe and Evelyn Yahraes, were long-time members.

Brandon was baptized at age 13 at Whitney. He believes some members may remember him when he was an infant or toddler.

Maran graduated from Boise High School, and Brandon completed Capital High.

Brandon moved to Abilene, Texas, where he worked for HEB Grocery. Then he moved to Bollingbrook, IL near Chicago. When he returned to Boise in 2007, he was a cashier for Albertsons and a backup scan coordinator.

In 2015 he went to work for Lithia Ford doing shipping and receiving in their parts department.

Maran attended Linfield College in McMinnville, OR, and received a Bachelor's degree in Creative writing in 2004. Then she joined AmeriCorps.

After a year in Charleston SC, she returned to Boise and tutored at Hawthorne Elementary School. She received a BA in education from BSU in 2009 and took a job teaching. She received a Master's in education in 2016 from the College of Idaho.

Today she teaches second grade at Jefferson Elementary.

In 2008, Brandon and Maran met for a second time at Whitney Family Camp. They were married by Rev. Christina in Christ Chapel at BSU, followed by a reception at Whitney Church.

Both joined Whitney after having membership in churches in other parts of the country. They prefer the smaller church and have become very busy.

Maran manages the Saturday lunch program once a month. Brandon is President of Methodist Men, serves on the Board of Trustees, and is a new member of the Church Council.

Maran went to the Walk to Emmaus in 2012; Brandon in 2017. Both now serve on the Board for the Walk to Emmaus. Brandon is Vice President and Maran is Agape Chair.

LOST!

I know that this may be a long shot, but I am asking members of the church if perhaps someone may have seen a certain color picture of a cousin of mine and his wife in a paper frame that opens up in the middle and stands up straight. I had brought it to church a while back to show another church member whose father had worked with Cole Fire Department and my cousin Dick Kelso who's pictured in the picture with his wife Reggie. I am still looking for what I can call ian heirloom. my cousin's father was one of many taken captive on Wake Island and died in Camp 18 aka "HELL CAMP". would appreciate hearing from someone to let me know that they may have seen this precious heirloom, I am still looking for it at home too. Also please pray that this picture and frame may resurface sometime in the future.

Please help spread the word, my church friends.

Capt. Barry Kelso

2080344-2257



How Can You Relate to Those You Do Not Know?

(excerpts from Lowell Greathouse — April 2019)

"Blessed are your eyes because they see, and your ears because they hear. I assure you that many prophets and righteous people wanted to see what you see and hear what you hear, but they didn't." Matthew 13: 16-17

I've been thinking a lot these days about the people we just don't seem to see. And when you think about it, there are actually a lot of them. Let me show you what I mean.

Consider these simple questions and realities:

1. When you think about the fruit and vegetables that you eat every day, how often do you think about the farm workers who picked them? *There are over 750,000 farm workers in the United States, who, according to the US Department of Labor, earned on average \$9.12 per hour or \$18,970 per year.*
2. When you think about the clothes you are wearing, how often do the countries of Vietnam, China, Cambodia, Sri Lanka, or Bangladesh come to mind? *Did you know that 98% of the clothes we wear in the US were made in other countries?*
3. When you think about who made your house, how often do names like Jorge, Francisco or Manuel come to mind? *According to US Labor Statistics, 27.3% of the workers in the construction trades are Latino or Hispanic.*
4. When you use your computer, did you consider the fact that immigrants played a significant role in making this possible?
5. And when you eat out, how often do you remember to thank the service staff that works in the kitchen or buses your table? Or when you check out of your hotel, how often do you remember the faces of the housekeeping staff that made your stay comfortable?

When I was in the 8th grade, my brother, Gordon, used to drive with me from time-to-time along Washington County's country roads. I remember one particularly memorable drive in which I saw what at the time we would have called migrant labor camps. I was stunned by what I saw.... The people there were living in horrible conditions in small, row dwellings. And up until that time, these families had been invisible to me.

1. *After this first encounter, we went back to these sites again, so that I could take pictures for a Social Studies project that I ended up calling "Invisible in Washington County." I still have the slides from that 89th grade project and I still vividly remember that consciousness-raising experience.*

But this early childhood memory applies to our life today as well.

Who is invisible to you? And...are they invisible due to omission or exclusion? The truth is that we can miss people by simply overlooking them, not noticing their existence....or we can miss them intentionally, by not wanting to accept that they are there. Both things, however, lead to the same condition: Some people around us simply get excluded from our worldview...but in the end, this diminishes our understanding life and those who contribute to it being a blessing.

Being invisible in the world is a terrible thing. And this is why it is important to always ask ourselves: Do we really see those around us? Is everyone at the table who needs to be present in our deliberations? Does what we do as a church truly touch the lives of those in our communities...even those who may be invisible to others?

Friends, the truth is, if we are going to serve the communities in which our congregations are located, then we are going to need to make sure that we see each other first and find ways so that those being seen feel like their dignity as human beings has been recognized...otherwise we're going to miss a lot of people who are our neighbors...people who may be responsible for building our homes, contributing to our food and health needs, making our clothes, or adding in other ways to the blessings in our lives.

This is a big task...and we have our work...and eyesight...cut out for us!

Blessings on your journey,

Rev. Lowell Greathouse, Mission and Ministry Coordinator for the Oregon-Idaho Annual Conference.



	Sun	Mon	Tue	Wed	Thu	Fri	Sat
				1 12:00 UMW 2:00 Prayer & Share	2 10:30 Visitor Follow up 5:45 Praise band	3 3:00 WEPRAY	4 10:00 Saturday lunch Table talk at Kimberly
5 10:00 Worship 8:30 "Practical Scripture" 9:30 am Adult SS 9:30 am Nursery open 10:20 am Children SS 12:30 Joan Wolfe Memorial	6 10:30 Finance 6:30 Stephen Ministry	7 6:30 Scouts	8 1:30 Prayer & Share 7:00 Chancel choir	9 5:45 Praise band	10 3:00 WEPRAY	11 9:00 a.m. UMM	10:00 Saturday lunch
12 10:00 Worship 8:30 am "Practical Scripture" 9:30 am Adult SS 9:30 am Nursery open 10:20 am Children SS Mother's Day	13 4:00 Riverbank Choir 6:30 Shavers 6:45 Worship team	14 10:30 Congre- gational Care 6:30 Scouts	15 1:30 Prayer & Share 7:00 Chancel choir	16 5:45 Praise band	17 Cultural Festival 3:00 WEPRAY 6:00 Community dinner	18 10:00 Saturday lunch 10:00 Church clean up	10:00 Saturday lunch
19 10:00 Worship 8:30 am "Practical Scripture" 9:30 am Adult SS 9:30 am Nursery open 10:20 am Children SS Acolyte training after worship	20 6:30 Stephen Ministry	21 7:00 Celia Cowan at Helen Shelby's	22 1:30 Prayer & Share 7:00 Chancel choir	23 5:45 Praise band	24 12:00 Provide lunch at South Jr. High 3:00 WEPRAY Sawtooth clean up	25 10:00 Saturday lunch Sawtooth_____	10:00 Saturday lunch
26 10:00 Worship 8:30 am "Practical Scripture" 9:30 am Adult SS 9:30 am Nursery open 10:20 am Children SS 11:15 Coffee with Pastor 5:00 pm MANNNA Sawtooth_____	27 Memorial Day Office closed Sawtooth_____	28 6:30 Scouts	29 1:30 Prayer & Share 7:00 Chancel choir	30 5:45 Praise band			